

Why Choose Us?

- Thousands of adults receive care and treatment from us every year.
- We have therapists trained in evidence-based best practices for psychiatric and substance abuse.
- With team member satisfaction in the top 10 percent nationally among health care organizations*, greater team member retention is reached, resulting in consistent and better care and dedication to our patients.
- We have programs in the top quartile in the country in patient satisfaction among behavioral health care providers*, which translates to better quality of care and better patient outcomes.
- Our Lady of Peace is accredited by The Joint Commission, the premiere health care accreditation organization in the country.
- We offer FREE Needs Assessments administered by professional clinicians. These assessments allow us to provide individualized treatment options at appropriate levels of care.

To schedule a FREE Needs Assessment, call (502) 451-3333 or (800) 451-3637.

*Based on 2008 survey.



What patients and their families say about us:

"My care was wonderful. I feel better than I have in years."

"The nursing staff was fantastic and played a big part in my recovery."

"The hospital has helped me and I am grateful."

"A great place to get help with any kind of illness. I have already recommended it to people."

"Absolutely the best. You can tell the staff genuinely cares."

"Group therapy was very helpful. It helps knowing I'm not alone."

"I will recommend Our Lady of Peace to anyone who needs help."

"Receiving care and treatment at Our Lady of Peace has given me a new outlook, alternative coping skills, a reassured sense of well being, and a new trust in treatment centers."



Pathways to Peace Adult Services



 **Our Lady of Peace**

A service of Jewish Hospital & St. Mary's HealthCare

2020 Newburg Road
Louisville, KY 40205
(502) 451-3330
24-Hour HelpLine:
(502) 451-3333 or (800) 451-3637
www.ourladyofpeacepsychiatry.org

 **Our Lady of Peace**

A service of Jewish Hospital & St. Mary's HealthCare

About Us

At Our Lady of Peace, we help people who are struggling with psychiatric and/or substance abuse illnesses. Individuals with these illnesses can live in recovery with treatment and ongoing support. We are staffed with highly credentialed professionals and offer a comprehensive array of clinical services at all levels of care.

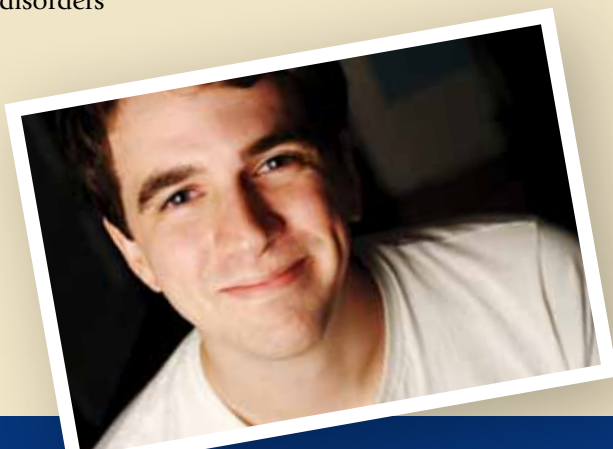
Our Team

Our team of professionals includes psychiatrists, nurses, social workers, chemical dependency counselors, art therapists, activity therapists, chaplains and mental health workers. Their comprehensive training enables them to provide a full range of services from general psychiatry to complex treatment in a compassionate and safe environment. Our team members are dedicated to taking very good care of everyone who comes to us for treatment.

Diagnosing Disorders

We work to help individuals stabilize and live in recovery with illnesses that include:

- Depression
- Anxiety
- Addictions
- Bipolar Disorder
- Post Traumatic Stress Disorder
- Schizophrenia
- Other psychiatric, substance abuse and co-occurring disorders



Levels of Care

Individuals with these types of illnesses are often struggling with relationships at work and at home. We provide inpatient care and outpatient program options, such as partial hospitalization and intensive outpatient. Our skilled and compassionate professionals, along with a comprehensive array of services, help individuals on the road to recovery. We continuously measure patient satisfaction in every unit and program and strive for the very best patient care experience we can provide.



If you sense that you or a loved one needs help, we offer a FREE Needs Assessment by a professional clinician. We will help you find the program that can best help you or your loved one. Call us at (502) 451-3333 or (800) 451-3637 to schedule a free assessment.



 **Our Lady
of Peace**

A service of Jewish Hospital &
St. Mary's HealthCare